



Instructions

JEEP JL - REAR SEAT DELETE MASS PLATFORM

Thank you for purchasing your M.A.S.S. Plus Platform from AAL! We greatly appreciate your trust in our company. We take that purchase and your commitment to us very seriously. If you have any questions along the way, please don't hesitate to give us a call at 385.202.4188.

****Please read these instructions thoroughly before starting this project.****



NOTE: These instructions pertain to the MASS Platform component of the seat delete only. The two other connecting sub assemblies (the 60% seat delete and 40% Seat delete) have their own respective instruction sheets. Complete this assembly last if you have purchased the 60% side and or the 40% side

Tools Required:

There is more than one tool for every job, but below is the list of tools we use for this installation.

- 4mm Hex Key Allen Wrench
- 8mm Hex Key Allen Wrench

What's included:

60% RSD Parts:

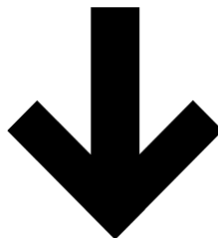
Main Driver Platform	1	Driver Nut Plate	1
Main Passenger Platform	1	Middle Plate Cover	1
Access Door	2	Middle Nut Plate	1
Access Door Spacer	4	Passenger Plate Cover	1
Trap Door Plate	4	Passenger Nut Plate	1
Nut Plate	8	Support Rail	3
Extended Nut Plate	2		
Driver Plate Cover	1		

Hardware:

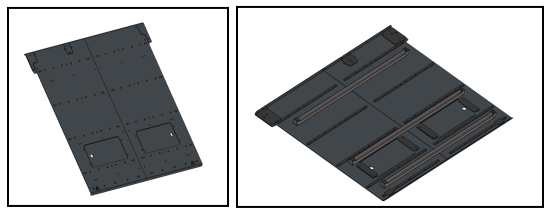
Magnet - 3/4" - Round	4
Flat Head screws - M6x14mm - 1.0 mm	86
Bolt - Button Head - M8x50mm - 1.25mm TP - Zinc	6
Washer - Flat - M8	8

Part Overview and Prep

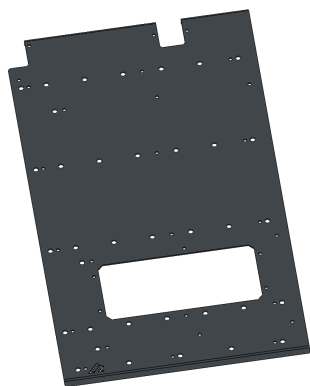
First lets review images of all the necessary parts and hardware to ensure we have everything we need for the installation process



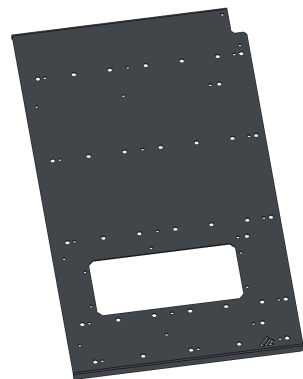
MASS Platform Parts:



Main Driver Platform:



Main Passenger Platform:



Access Door:



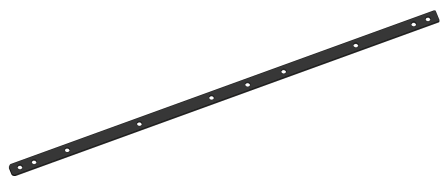
Access Door Spacer:



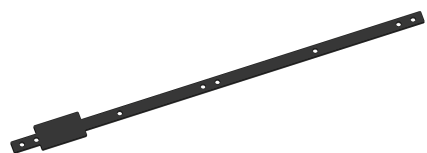
Trap Door Plate:



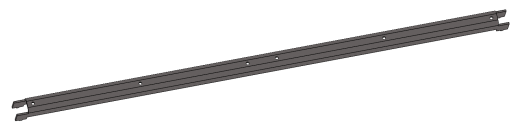
Nut Plate:



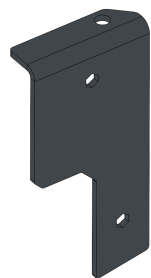
Extended Plate:



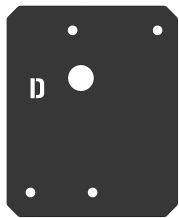
Driver Plate Cover:



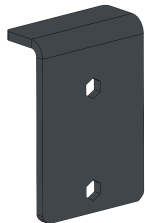
Driver Plate Cover:



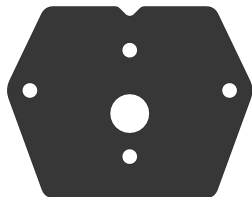
Driver Nut Plate:



Middle Plate Cover:



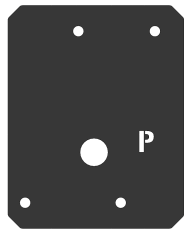
Middle Nut Plate:



Passenger Plate Cover:



Passenger Nut Plate:



Rail Support:



Hardware:

Magnet - 3/4" - Round



8

Button Head Bolt - M8x50 mm

6



86

Flat Washer - M8

6



Flat Head Bolt - M6x14mm

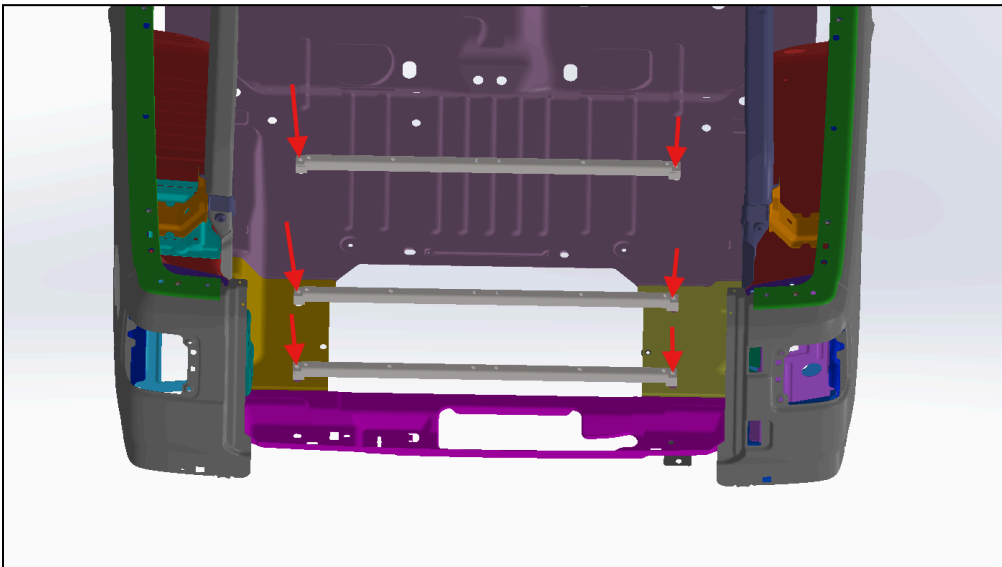


Once we've confirmed that we have everything, we can begin constructing by preparing the truck bed for installation:

i) The first and only step in this assembly is to remove all rear floor mats and the accompanying snaps that hold them in. The base carpets can stay in place. The base should look completely empty when looking at the rear seats through the trunk.

Step 1 - Attach the Support Rails to the Floor of the Vehicle

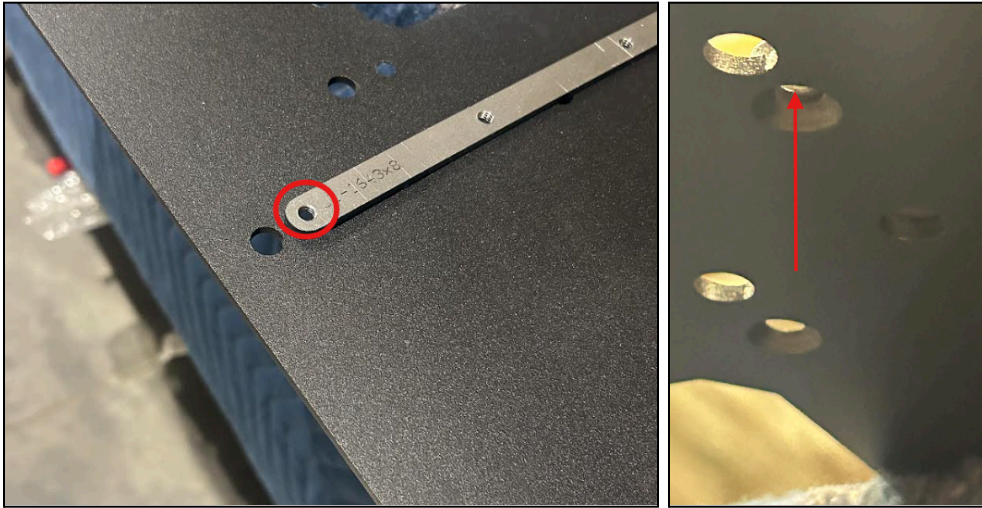
Locate the six holes in the base of the vehicle highlighted in the image below. Take the three support rails and align them with these slots and install using **(6) M8x50mm bolts** and **(6) M12 washers**. These rails will serve as the means of attachment between the MASS platform and the frame of the vehicle.



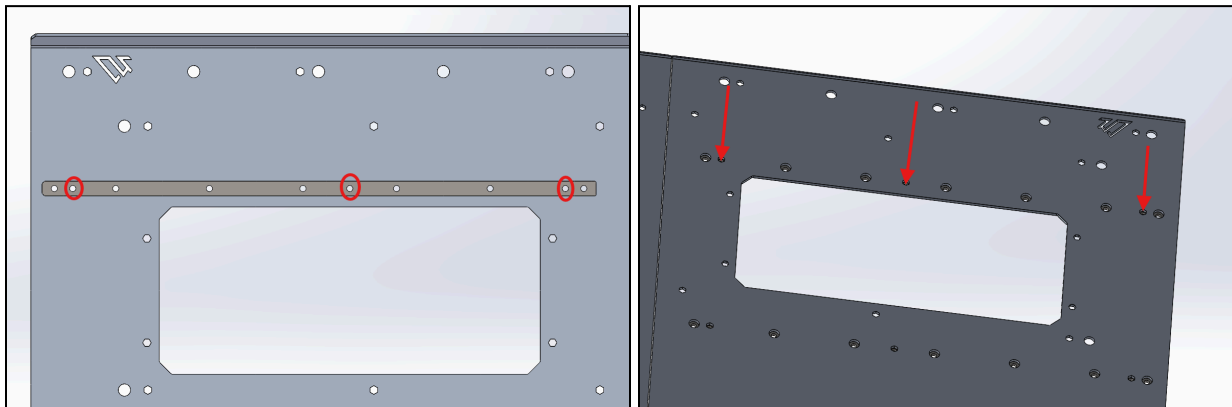
Step 2 - Attach all nut plates and brackets to the main panels

Now that our attachment points of the pain panel are established, we can begin the assembly of the main panels.

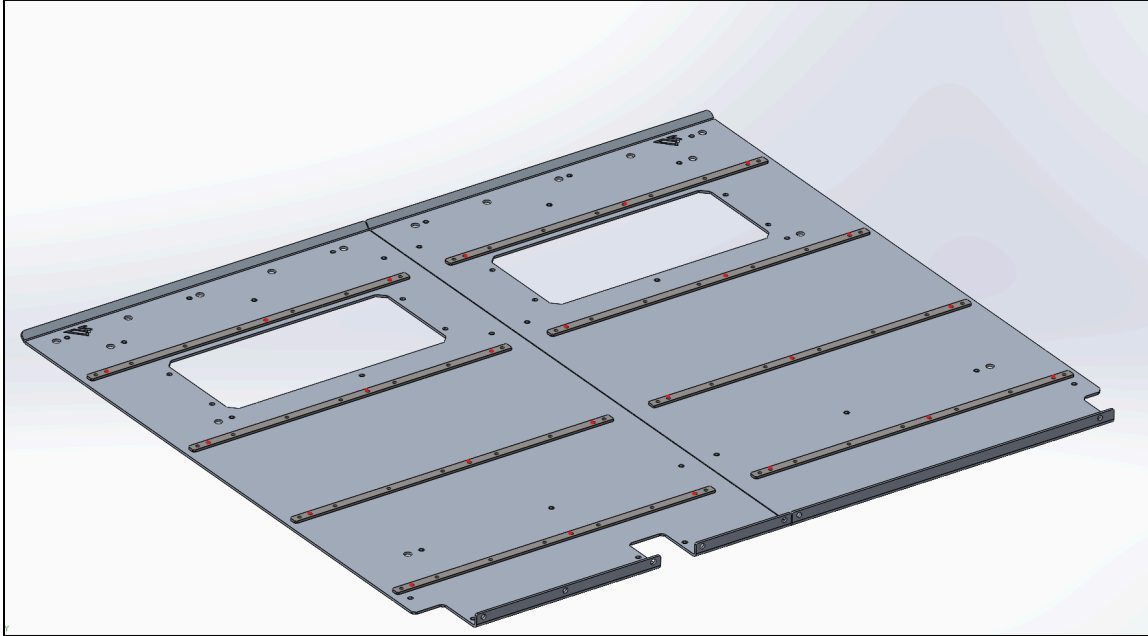
Note: A lot of the bolts in this assembly need to insert downward through the main panel and brackets. This makes assembly difficult as you would need to hold the bracket in place with your hand to screw downward. We recommend lying the main panel upwards on a table and installing from under like so



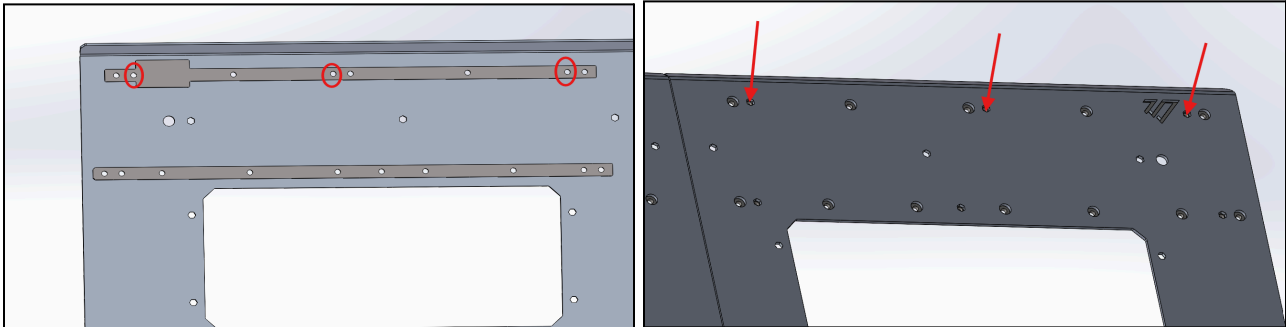
First we install the **Nut Plates** using **(3) flat M6x14mm bolts** per plate through the holes indicated in the image below. Note: Each of these holes are hexagon-shaped in the main panels in case you have trouble locating them from the image



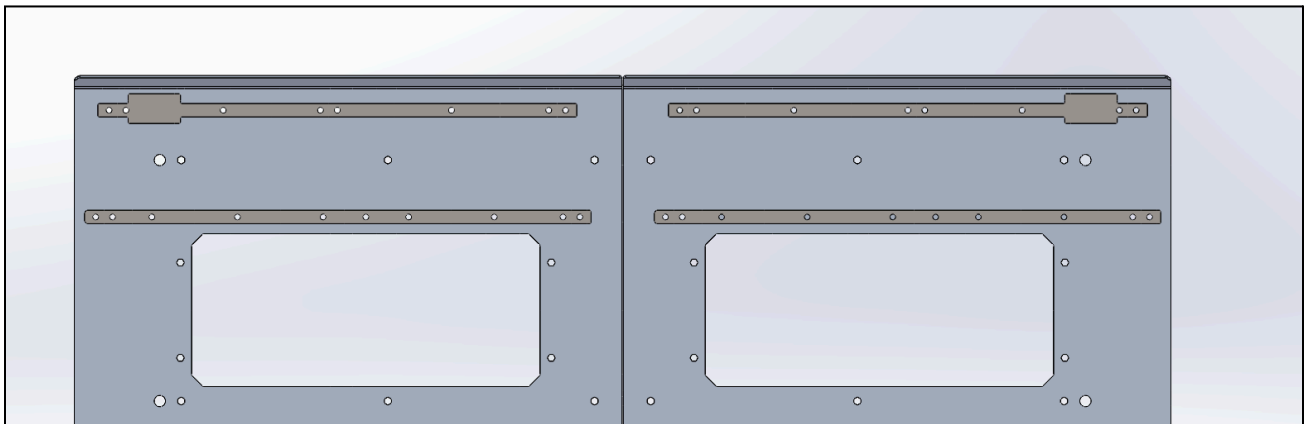
Install a total of 4 plates per side



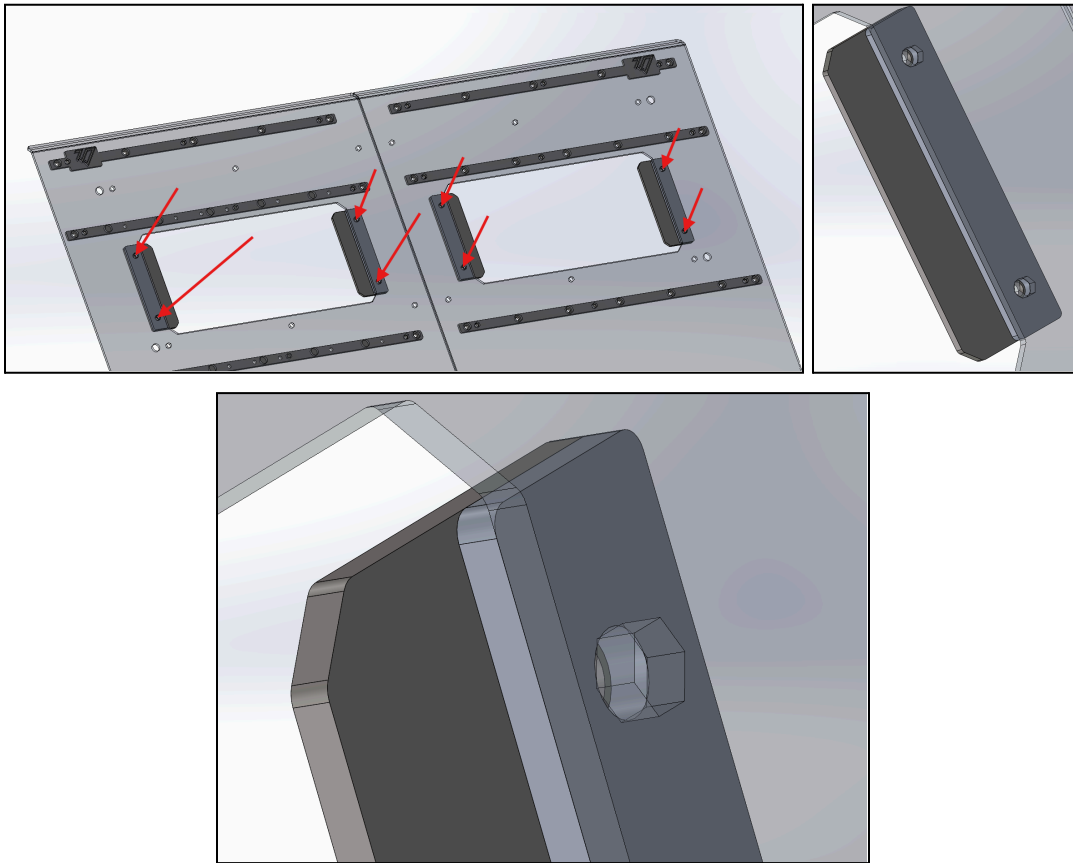
Now we can install the **2 Extended Nut Plates** in a very similar fashion using **(3) flat M6x14mm bolts** per plate. Ensure that the extended rectangle covers the hollowed AAL Logo in the Main panels. Once again these holes will be hexagon shaped in the main panel



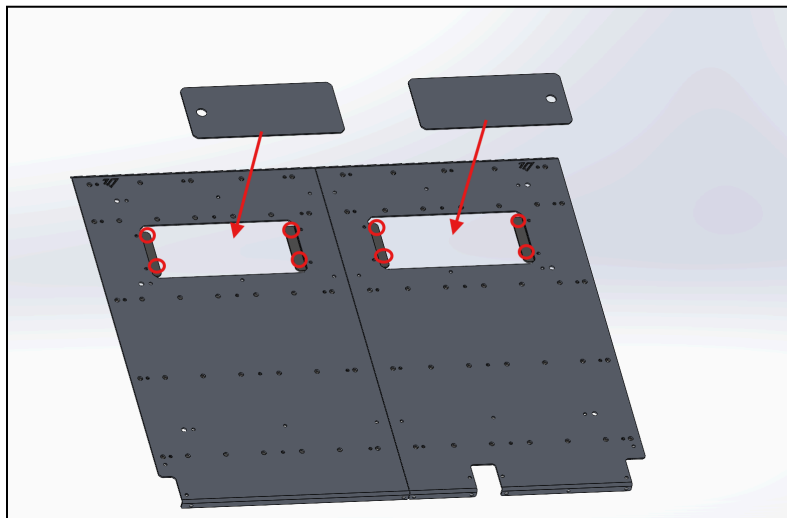
The panels should look like this



Next we'll attach the Access door magnet mounts. To do this use **(4) M6x14mm flat bolts** and install two trap door plates with the access Door Spacers between the plate and the panel. **Do this for both** of the main panels (8 bolts, 4 plates, and 4 spacers total)



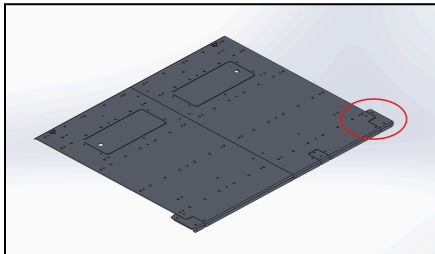
Once the mounts are in place we can place the one **3/4" - Round Magnet** on each of the four corners shown in the image below (8 total). Then simply place each of the **2 Access Doors** in their respective slots.



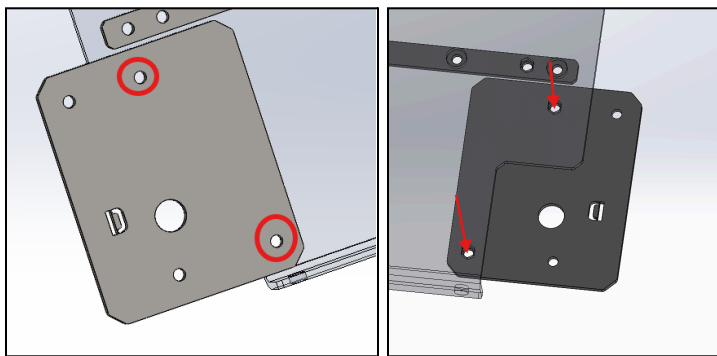
Step 3 - Install the Seat Nut Plates and Covers

If you currently do not have a 60% or 40% installed, you can ignore this step. If you do however, you need to install 3 more nut plates as well as covers for those plates.

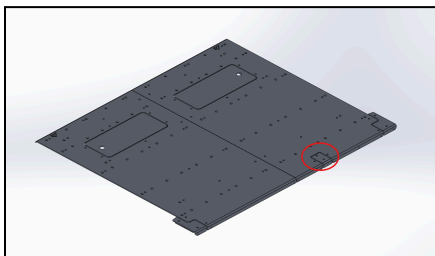
First is the driver side seat tab. Locate the tab here



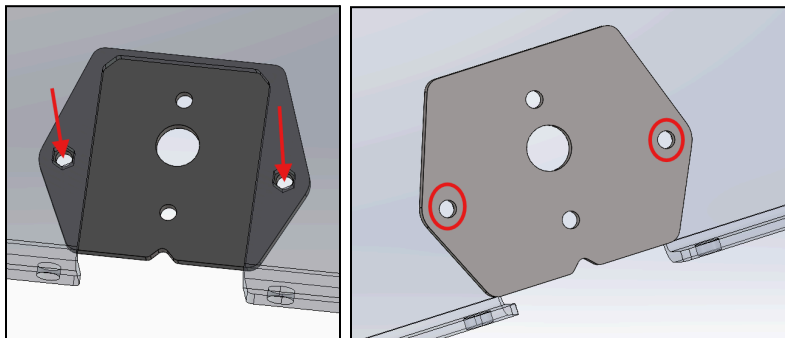
Then install the **Driver Nut Plate** using (2) M6x14mm flat bolts



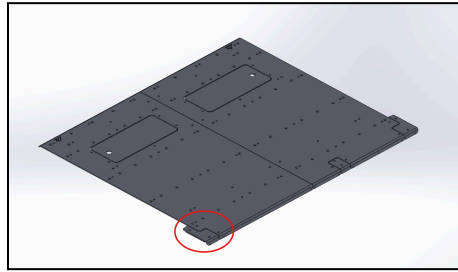
Next is the middle seat tab. Locate it here



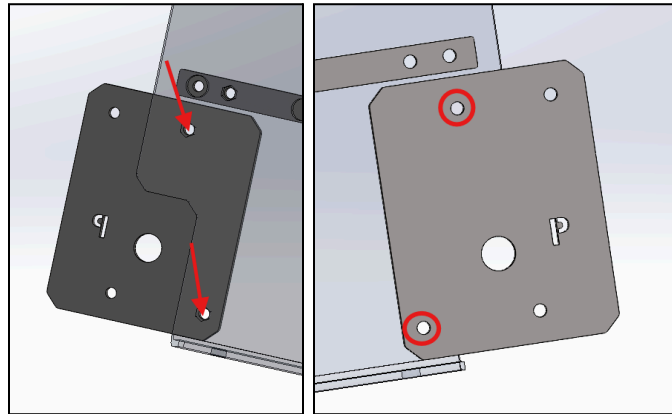
Install the **Middle Nut Plate** using (2) M6x14mm flat bolts



Finally is the passenger seat tab. Locate it here

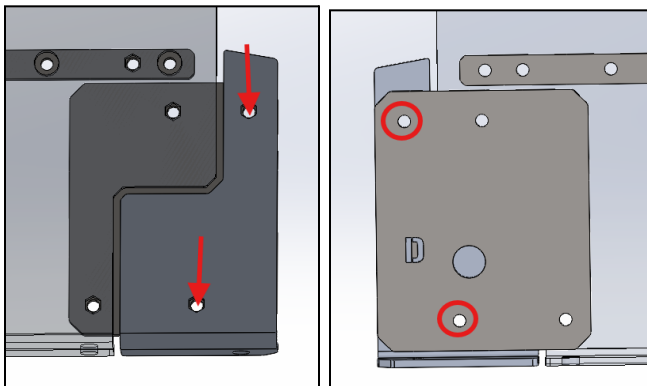


Install the **Passenger Nut Plate** using **(2) M6x14mm flat bolts**

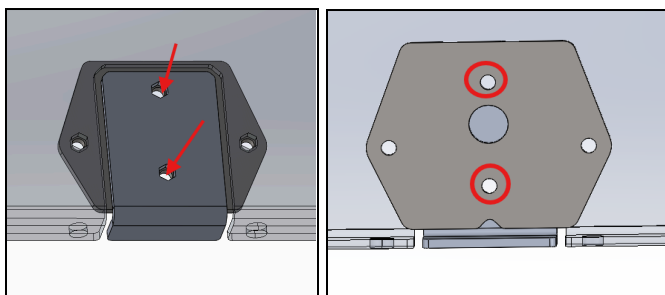


Now we can easily attach the **Nut Plate Covers** for the driver passenger and middle seats. Using the same **(2) M6x14mm flat bolts** for each, repeat the process.

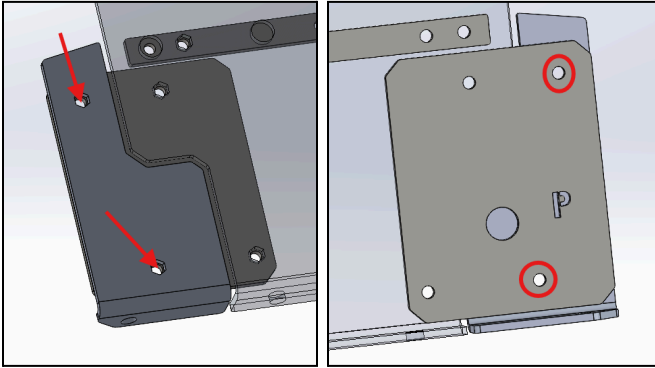
Driver Side seat



Middle Seat

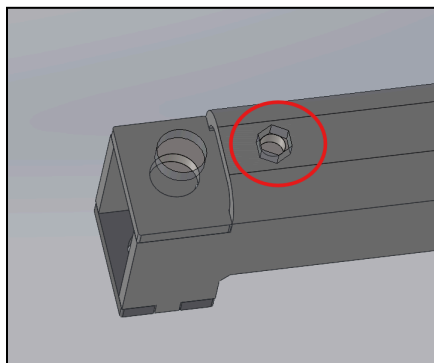
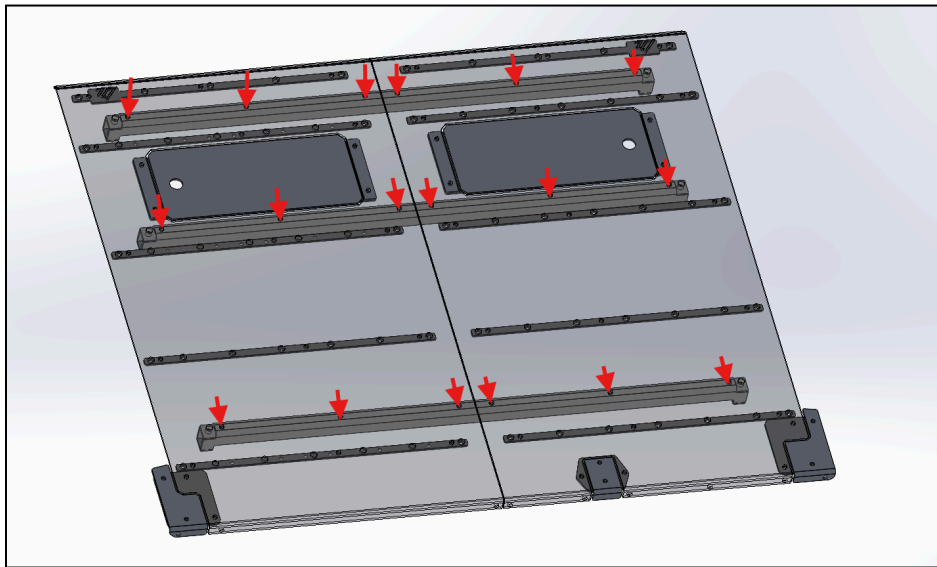


Passenger Side Seat

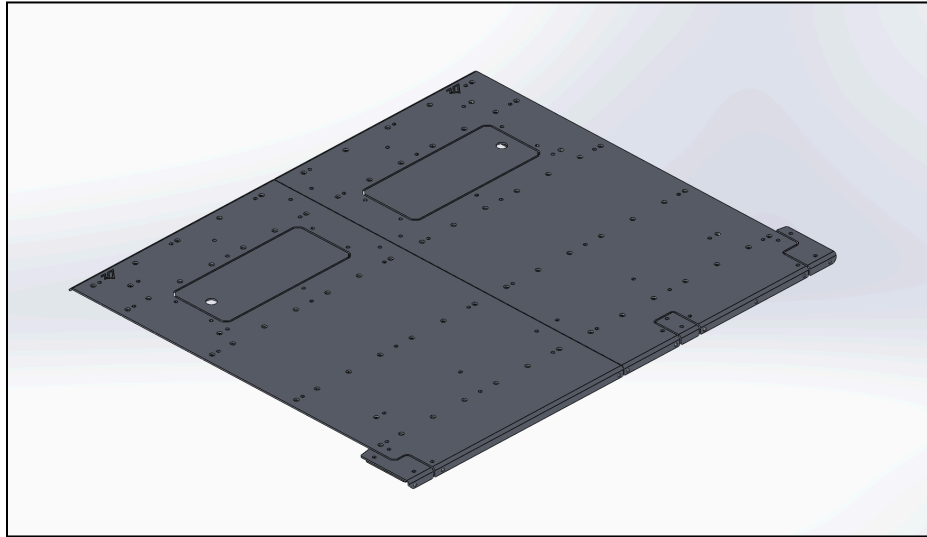


Step 4 - Install the Main Panels into the Support Rails

The final step is to install the main panels into the support rails using **(18) M6x14mm flat bolts** per panel, 6 per rail, (36 total). Place the panels side by side and make sure the holes in the center of the **Support Rails** align with the hexagon shaped holes in the main panels



Your MASS Platform is complete!



Share Your Photos!

We take great pride in building our products and we hope that pride extends to you after installing your M.A.S.S. Plus Platform. If you are able to share your photos online (Facebook and Instagram), please tag **@AmericanAdventureLab**. We would love to see how it turned out and give you some reciprocal attention in return!

Congrats! You're all done!

Thank you!

At American Adventure Lab, we strive to improve anywhere we can. If you experience any issues with this product or have any suggestions, please let us know.

If you have any questions or concerns, please don't hesitate to reach out to us at 385.202.4188 or via email at Support@erp.adventurelab.com.

